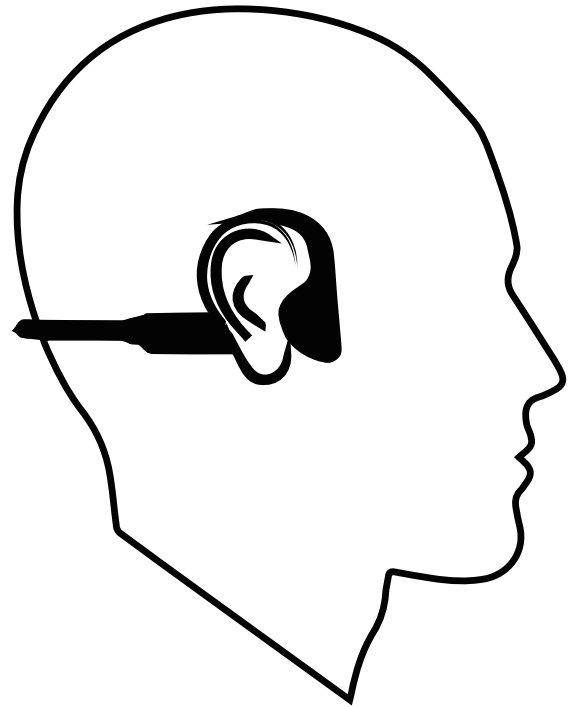
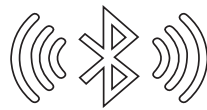


# Mimitakara 6K11

---

## 【User Manual】



Remote Microphone : Hear D I  
Headphone : Mimitakara 6K11

# Using Instructions

## ● Pairing Headphone with Hear D I

Press and hold the power button of Hear D I and the headphone at the same time. The LED light of Hear D I will flash red and green lights alternately, and the white light of the headphone will flash in a breathing pattern. They automatically pair with each other. When pairing is successful, the green light of Hear D I will stay on, and the white light of the headphone will blink every 5 seconds.

## ● Hear D I Wireless Connection

Place the Hear D I near the sound source (such as a TV or computer). The collected sound will automatically become louder and be transmitted to the headphone via Bluetooth.

## ● Hear D I Wired Connection

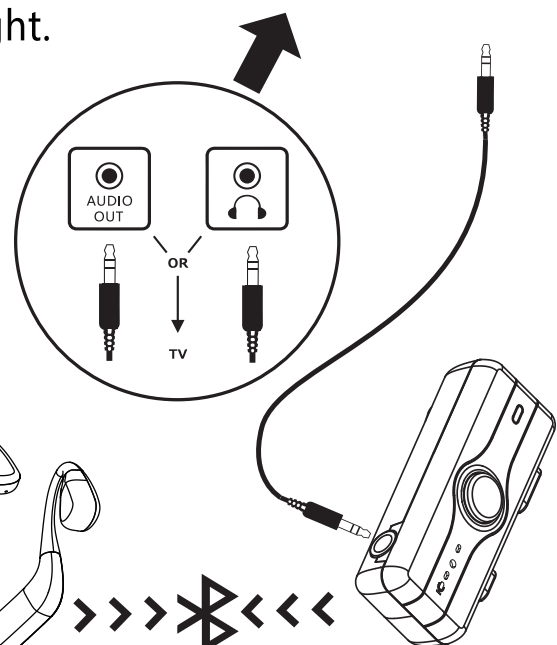
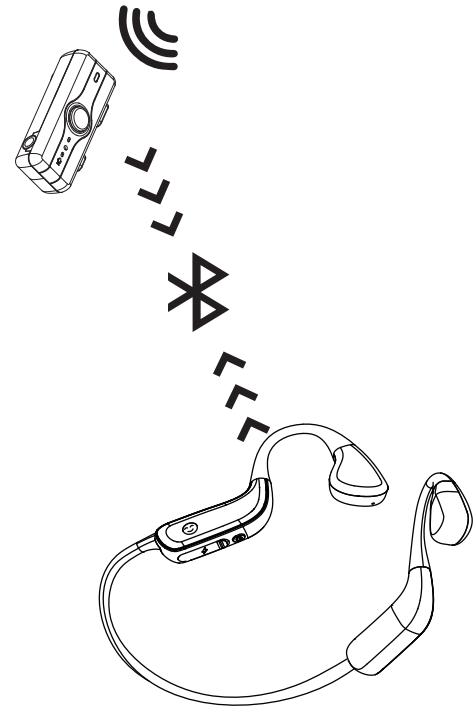
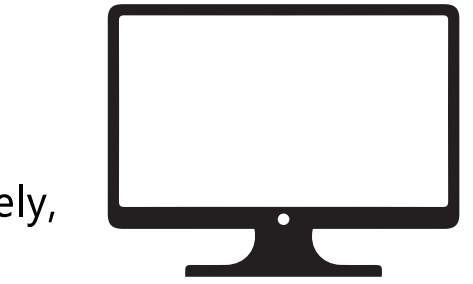
Hear D I can connect to a TV or other media/MP4 players through the included 3.5mm AUX audio cable. The Hear D I will automatically amplify the sound source and transmit it to the headphone.

## ● Using Hear D I While Charging

Hear D I can be used normally while charging. During this time, the indicator light will show a constant green light and a slowly flashing red light. Once fully charged, the red light will turn off.

## ● Headphone used alone

When the Hear D I is turned off separately in pairing mode, the headphones will be powered off simultaneously. When the headphones are restarted, red and green lights will flash alternately, indicating they are ready to be connected to the phone for use.



! Headphone used alone



# Product Instructions

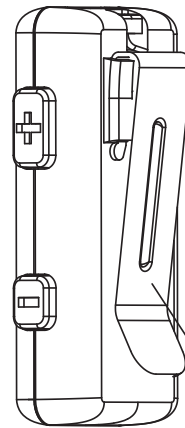
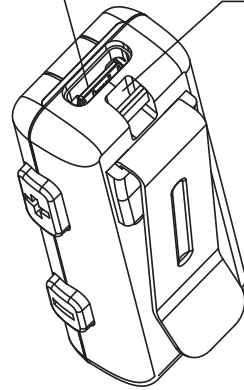
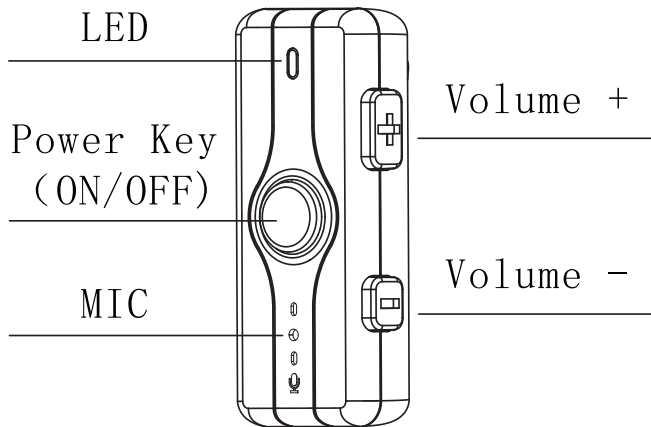
## Hear D I

### BLUETOOTH SOUND AMPLIFIER

Type-C  
charging port

Lanyard hole

Comes with a sling  
and can be hung  
around the neck



Clip  
(for clipping  
to your clothes)

## Specification

Bluetooth Device : Hear D 1	
Connection method : Bluetooth / AUX Cable(Dual Mode)	
Bluetooth Version: 5.2	Bluetooth connection distance: 10meters
Microphone sensitivity: -38dB±2dB	Weight: 13g
Battery: Lithium battery	Battery Capacity: 150mAh
Play time: 8-10hours	Time to Full Charge: About 2 hours
Electrical specifications: 5V/1A	Charge port: Type-C

# Features

Features		Operating Instructions		Light Indicator
Power ON/OFF	Power ON	Press & hold power button for 5 seconds		Blinks Green
	Power OFF	Press & hold power button for 5 seconds		Lights OFF
Pair with Headphone	Pairing	Pairing after Hear D I is power ON		Slow flashing red and green lights
	Connected	When the earphones are on and close to Hear D I, two devices paired with each other automatically		Solid Green
	Reconnected	Automatically reconnect to the previously paired device when powering ON		Blinking Green
Call	Answer/End Calls	Press power button one time		-
	End Calls	Press & hold power button for 3 seconds		-
3.5mm AUX Connection Mode		Plug in 3.5mmAUX to receive audio		Solid Green
Bluetooth Connection Mode		Place the Hear D I within 50mm of the sound source		Solid Green
Battery	Battery Low	-	Red light blinks every 10 seconds	
	Charging	-	Flashing red light	
	Full Charged	-	Red light goes off	
	When Type-C plug in, Hear D I start charging			
Use while Charging	Used normally when charging		Solid Green, flashing red light	
Volume	Volume +	Press " + " button one time		-
	Volume -	Press " - " button one time		-
Factory reset setting		Double click " - " button and then power off automatically in pairing state		Flashing red and green lights and then OFF
Noise Reduction ON/OFF Switch		Press the power key twice (Default Noise Reduction ON)		-
Power OFF while Pairing with Headphone		Hold the power key for 3seconds		Green light goes off

# Storage and Maintenance

- To prevent possible hearing damage or loss, do not listen at high volume levels for long periods of time. Sound can also be distorted at too high a volume.
- After storing for a long time, please recharge before using.
- Pay attention to the placement environment, as excessively cold, hot, or humid environments may shorten the battery life. Keep the charging port dry before charging to reduce the risk of headphone damage.
- Voltage/Current 5V/1A.

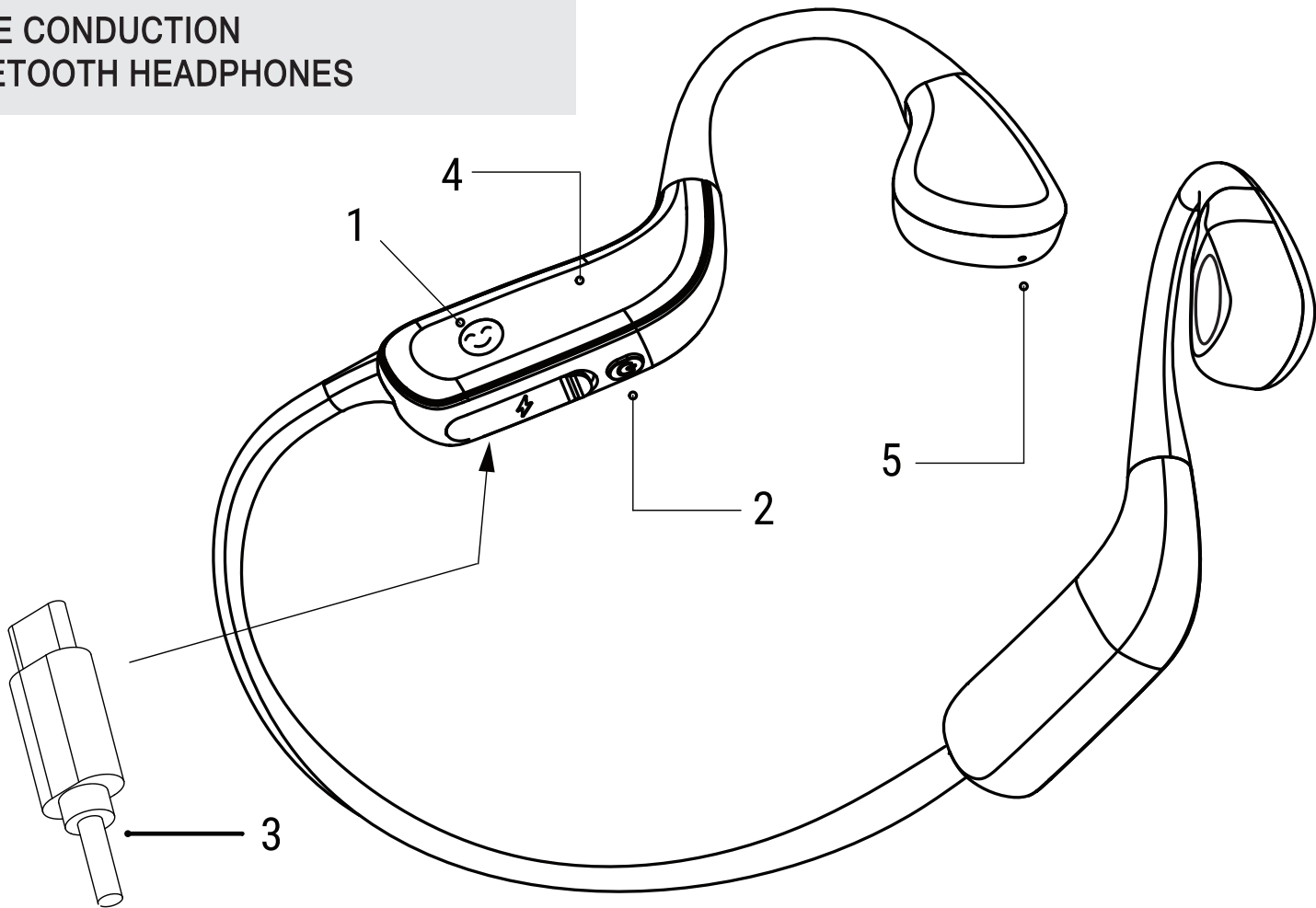


## Warning

- Bone conduction sound amplifiers do not repair the user's previous hearing, nor do they prevent or improve hearing damage caused by organ conditions. In most cases, infrequent use of sound amplifiers cannot maximize user benefits. The use of assistive hearing equipment is only a part of hearing rehabilitation, and requires auditory training and lip reading guidance to assist.
- Bone conduction sound amplifiers are not waterproof and should not be worn in heavy rain, bathing, showering, diving, or other environments that may expose them to a large amount of water. Because it may cause damage when exposed to moisture. Protect your bone conduction sound amplifier from impact or vibration, and prevent it from falling.
- When removing the device, turn off the device first. If you do not use a Bone conduction sound amplifier for a long time, you should fully charge it and place it in the packaging box when it is turned off.
- The mode key and volume button should be used correctly, and should be turned on or off as gently as possible. Avoid excessive force or pulling, which may cause damage to the equipment.
- Unless otherwise specified accessories are used, using transducers, cables, and bone conduction sound amplifiers together may result in an increase in bone conduction sound amplifier emissions or a decrease in immunity.

## Mimitakara 6K11

BONE CONDUCTION  
BLUETOOTH HEADPHONES



- 1: LED Indicator
- 2: Power Button
- 3: Type-C Charging Port
- 4: Control Bud ( Right bud )
- 5: Microphone

Note: All pictures in this manual are schematic diagrams which may deviate from the actual object. Please refer to the actual object.

# Features

Features		Operating Instructions	Light Indicator	Sound Notification
General Settings	Turn On	Press & hold power button for 5 seconds	Blinks White	"Power on"
	Turn Off	Press & hold power button for 5 seconds	-	"Power off"
Pairing	Connection in Progress	Headphone will automatically enter bluetooth pairing when powered on	Slow flashing white lights	"Pairing"
	Connection Progress	Select " Mimitakara 6K11 " in device settings to connect	White light flashes once every 5 seconds	"Connected"
	Disconnect	Disconnect bluetooth connection from previously connected device	Slow flashing white lights	"Disconnected"
	If no connection over 3 minutes,earbuds will automatically turn off		-	"Power off"
Call	Answer/ End Calls	Press power button one time	-	"Incoming call"
	Reject Calls	Press power button twice	-	-
volume adjustment	volume +	Slide touch form front to back	-	1 Doo "Maximum Volume"
	volume -	Slide touch form back to front	-	1 Doo "Minimum Volume"
Music	Play / Pause	Press power button one time	-	1 Doo
	Play Previous	Press power button three times	-	3 Doo
	Play Next	Press power button twice	-	2 Doo
Battery	Low Battery	-	White light flashes once every 10 seconds	"Battery low"
	Charging/Fully charged : Solid White/None			
	When Type C plug in, headphone start charging			
Factory reset setting		When Headphone is turned off,press and hole power button for 10 seconds	White light flashes 3 times	"Power on" "Pairing" "Battery High" "Power off"
Voice assistant		Press slide touch 3 seconds	-	1 Doo
Indicator ON/OFF		Press power key five times(Default ON)	-	-
Battery Broadcast		Battery Broadcast after powering ON	-	"Battery high" "Battery medium" "Battery low"
Noise Reduction ON/OFF Switch		While Pairing with Hear D I	-	"Noise Reduction On" "Noise Reduction Off"
Power OFF while Pairing with Hear D I		Hold the power key for 3 seconds	White light goes off	"Power off"

# Product Specifications

Model No : Mimitakara 6K11	
Bluetooth Version : V5.2	Wire Range : 10 Meters / 33 Feet
Frequency Response : 100 Hz~20 KHz	Bluetooth Response : 2.402-2.480 GHz
Impedance : 16 $\Omega$	Speaker Driver : $\varnothing$ 14.0mm BCT
Microphone Sensitivity : -40 dB $\pm$ 2 dB	Weight : 35 g
Battery Capacity : 150 mAh	Battery : lithium battery (Maximum operating temperature 45 degrees)
Play Time : About 8 Hours	Charging Time : About 1.5 Hours
Button Style : Button+Smart Touch	Waterproof Level : IP55
Electrical Specifications : 5V / 1A	Compatible Profiles : HFP 1. ,HSP 1. 2, A2DP 1. 3, AVRCP 1. 6



# FCC Warning

This device complies with Part 15 of the FCC Rules.

Operation is subject to the following two conditions:

- (1) This device may not cause harmful interference, and
- (2) this device must accept any interference received, including interference that may cause undesired operation.

NOTE 1: This equipment has been tested and found to comply with the limits for a Class B digital device, pursuant to part 15 of the FCC Rules. These limits are designed to provide reasonable protection against harmful interference in a residential installation. This equipment generates, uses and can radiate radio frequency energy and, if not installed and used in accordance with the instructions, may cause harmful interference to radio communications. However, there is no guarantee that interference will not occur in a particular installation. If this equipment does cause harmful interference to radio or television reception, which can be determined by turning the equipment off and on, the user is encouraged to try to correct the interference by one or more of the following measures:

- Reorient or relocate the receiving antenna.
- Increase the separation between the equipment and receiver.
- Connect the equipment into an outlet on a circuit different from that to which the receiver is connected.
- Consult the dealer or an experienced radio/TV technician for help.

NOTE 2: Any changes or modifications to this unit not expressly approved by the party responsible for compliance could void the user's authority to operate the equipment.

The device has been evaluated to meet general RF exposure requirement.  
The device can be used in portable exposure condition without restriction.

The device must not be co-located or operating in conjunction with any other antenna or transmitter.